



# **AETEK EPoX Manager User Guide**

Simplify and Secure Your EPoX Network

Document Revision: V1.0

## Table of Contents

<b>1. Introduction .....</b>	<b>2</b>
1.1 Overview.....	2
1.2 Requirements.....	2
1.3 Installation .....	2
<b>2. User Interface .....</b>	<b>3</b>
<b>3. Configuration and Setup .....</b>	<b>5</b>
3.1 Command Modes .....	5
3.1.1 Single .....	5
3.1.2 One-to-One (1:1) Joining.....	7
3.1.3 One-to-Many (1:N) Joining.....	9
3.2 MDU (Multiple Dwelling Units) Setting .....	11

# 1. Introduction

---

## 1.1 Overview

The AETEK EPoX Manager is a configuration tool designed to securely group and manage all AETEK EPoX devices, including EPoC, EPoT, and EPo2. Key functions of the tool include:

- **Setting Passwords:** The EPoX Manager allows users to set unique passwords for individual devices or groups, ensuring secure network communication and preventing unauthorized access.
- **Network Grouping (Joining):** In environments prone to signal interference, the EPoX Manager can create new network groups for AETEK EPoX devices, maintaining stable and secure connections.
- **Plug-and-Play Compatibility:** All AETEK EPoX devices come with a factory-set NMK password, enabling plug-and-play installation. The EPoX Manager provides flexibility to customize these passwords for individual devices or groups as needed.

When multiple network groups are required, it is recommended to use the AETEK EPoX Manager to create the desired groups before installing the devices. This ensures a seamless and efficient setup process, allowing the devices to be easily added to their respective groups upon installation.

## 1.2 Requirements

- The AETEK EPoX Manager tool can be installed on PCs running Windows 7 or higher version.
- The WinPcap application, version 4.1.3, is required before executing the AETEK EPoX Manager. (Visit [https://www.winpcap.org/install/bin/WinPcap\\_4\\_1\\_3.exe](https://www.winpcap.org/install/bin/WinPcap_4_1_3.exe) to download the file.)

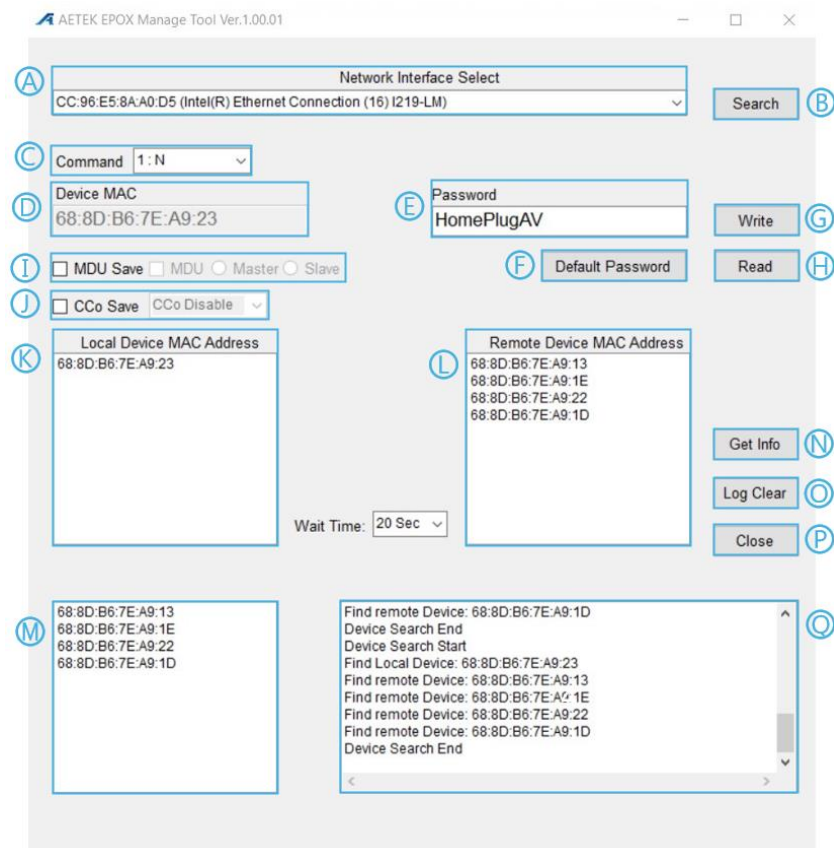
## 1.3 Installation

To install the AETEK EPoX Manager tool, follow these steps to set up the EPoX Manager on your local system and begin configuring your AETEK EPoX device network.

1. **Move the Compressed File:** Move the "AETEK EPoX Manager\_tool" compressed file to a local folder on your PC.
2. **Decompress the File:** Decompress the "AETEK EPoX Manager\_tool" compressed file.
3. **Launch the Application:** Double-click the "AETEK\_EPoX\_Config\_application" in the decompressed folder to launch the AETEK EPoX Manager.

## 2. User Interface

This chapter introduces you the key features and functionalities that the AETEK EPoX Manager offers. The main components of the UI are shown in the figure below.



Features	Description
<b>A Network Interface Select</b>	Select the network interface name that is connected to the AETEK EPoX device(s).
<b>B Search</b>	Click this button to find all AETEK EPoX devices connected to the network. The MAC addresses of the discovered devices will be displayed in the "Local Device MAC Address" and "Remote device MAC Address" sections.
<b>C Command</b>	Choose one of the following command modes: <ul style="list-style-type: none"> <li><b>Single:</b> Use this mode when setting up a single EPoX device.</li> <li><b>1:1:</b> Use this mode when setting up EPoX devices in a one-to-one configuration.</li> <li><b>1:N:</b> Use this mode when setting up EPoX devices in a one-to-many configuration.</li> </ul>
<b>D Device MAC</b>	Display the MAC address of the selected device(s).
<b>E Password</b>	Input the grouping (joining) password.
<b>F Default Password</b>	Click this button to change the password to the factory default value.

Features	Description
<b>G Write</b>	<ul style="list-style-type: none"> <li>Click this button to save all settings and changed values.</li> </ul>
<b>H Read</b>	Click this button to retrieve the values set on the device(s).
<b>I MDU (Multiple Dwelling Units)</b>	<ul style="list-style-type: none"> <li><b>MDU Save:</b> Check this box to save the MDU setting values.</li> <li><b>MDU:</b> Check this box to activate the MDU settings.</li> <li><b>Master:</b> Check this radio button to set the selected EPoX device as the Master.</li> <li><b>Slave:</b> Check this radio button to set the selected EPoX device as a Slave.</li> </ul>
<b>J CCo (Central Coordinator)</b>	<p><b>CCo Save:</b> Check this box to save the CCo setting values. (Only for special devices)</p> <p>If the "CCo Save" option is checked, three modes will be available:</p> <ul style="list-style-type: none"> <li><b>CCo Disable:</b> Select this mode if the CCo functionality is not required.</li> <li><b>Master:</b> Select this mode to set the selected EPoX device as the Master.</li> <li><b>Slave:</b> Select this mode to set the selected EPoX device as a Slave.</li> </ul>
<b>K Local Device MAC Address</b>	Displays the MAC address of the local device(s) connected to the network.
<b>L Remote Device MAC Address</b>	Displays the MAC address of the remote device(s) that is connected to the local device(s).
<b>M MAC Address</b>	This section displays the MAC address(es) of the remote device(s) connected to the selected Local Device MAC Address section.
<b>N Get Info</b>	Retrieves setting values for all connected devices to the network.
<b>O Log Clear</b>	Clears all the information in the log record section.
<b>P Close</b>	Closes the AETEK EPoX Manager tool.
<b>Q Log Record</b>	This section displays the device log information.

## 3. Configuration and Setup

---

This chapter specifies the steps to prepare the EPoX devices for use with the AETEK EPoX Manager, ensuring that the devices are properly set up and ready for further management and configuration tasks.

### 3.1 Command Modes

#### 3.1.1 Single

Configure the AETEK EPoX devices by following the steps below:

1. **Select Network Interface:** In the AETEK EPoX Manager, select the network interface name that is connected to the EPoX device(s).
2. **Search for Connected Devices:** Click the "**Search**" button to find the EPoX devices connected to the network. The MAC addresses of the discovered devices will be displayed in the "**Local Device MAC Address**" section.
3. **Select Command Mode:** Set the "**Command**" to "**Single**" mode.
4. **Select Device to Configure:** Click on the MAC address of the EPoX device you want to configure in the "**Local Device MAC Address**" section. The MAC address of the selected device will be shown in the "**Device MAC**" section.
5. **Set the Password (if necessary):** If the device's password is set to the factory default, "HomePlugAV" will be displayed in the "**Password**" section. If the password is different from the factory default, the "**Password**" section will be blank.
  - i. To change the password, enter the desired password in the "**Password**" section.
  - ii. The password should consist of 8 digits, uppercase and lowercase letters, and numbers only. Special symbols or characters are not allowed.
6. **Save the Changes:** Click the "**Write**" button to save the configured settings.

AETEK EPOX Manage Tool Ver.1.00.01

① Network Interface Select  
CC:96:E5:8A:A0:D5 (Intel(R) Ethernet Connection (16) I219-LM) ② Search

③ Command Single

④ Device MAC  
68:8D:B6:7E:A9:23 ⑤ Password ⑥ Write

☐ MDU Save ☐ MDU ☐ Master ☐ Slave  
☐ CCo Save CCo Disable

④ Local Device MAC Address  
68:8D:B6:7E:A9:23

Remote Device MAC Address  
68:8D:B6:7E:A9:13  
68:8D:B6:7E:A9:1E  
68:8D:B6:7E:A9:22  
68:8D:B6:7E:A9:1D

Wait Time: 20 Sec

Get Info  
Log Clear  
Close

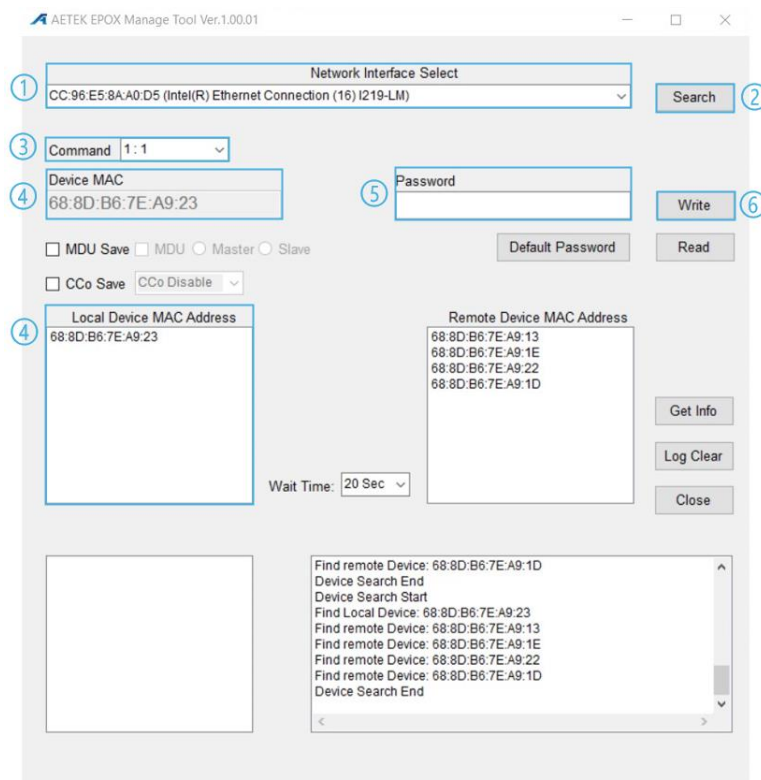
68:8D:B6:7E:A9:13  
68:8D:B6:7E:A9:1E  
68:8D:B6:7E:A9:22  
68:8D:B6:7E:A9:1D

Find remote Device: 68:8D:B6:7E:A9:1D  
Device Search End  
Device Search Start  
Find Local Device: 68:8D:B6:7E:A9:23  
Find remote Device: 68:8D:B6:7E:A9:13  
Find remote Device: 68:8D:B6:7E:A9:1E  
Find remote Device: 68:8D:B6:7E:A9:22  
Find remote Device: 68:8D:B6:7E:A9:1D  
Device Search End

### 3.1.2 One-to-One (1:1) Joining

To configure AETEK EPoX devices in a one-to-one (1:1) joining mode, follow these steps:

1. Select Network Interface: In the AETEK EPoX Manager, select the network interface name that is connected to the EPoX device(s).
2. Search for Connected Devices: Click the **"Search"** button to find the EPoX devices connected to the network. The MAC addresses of the discovered devices will be shown in the **"Local & Remote Device MAC Address"** section.
3. Select Command Mode: Set the **"Command"** to **"1:1"** mode.
4. Select Local Device to Configure: Click on the MAC address of the local EPoX device you want to configure in the **"Local Device MAC Address"** section. The MAC address of the selected device will be shown in the **"Device MAC"** section.
5. Set the Password (if necessary): If the device's password is set to the factory default, "HomePlugAV" will be displayed in the **"Password"** section. If the password is different from the factory default, the **"Password"** section will be blank.
  - i. To change the password, enter the desired password in the **"Password"** section.
  - ii. The password should consist of 8 digits, uppercase and lowercase letters, and numbers only. Special symbols or characters are not allowed.
6. Save the Changes: Click the **"Write"** button to save the configured settings.



The screenshot shows the AETEK EPoX Manager Tool interface with the following elements:

- Network Interface Select:** A dropdown menu showing "CC:96:E5:8A:A0:D5 (Intel(R) Ethernet Connection (16) I219-LM)".
- Search:** A button to initiate the device search.
- Command:** A dropdown menu set to "1:1".
- Device MAC:** A text field displaying "68:8D:B6:7E:A9:23".
- Password:** A text field for entering a password.
- Write:** A button to save the configuration.
- MDU Save:** A checkbox.
- MDU:** Radio buttons for Master and Slave.
- CCo Save:** A checkbox.
- CCo Disable:** A dropdown menu.
- Local Device MAC Address:** A list box showing "68:8D:B6:7E:A9:23".
- Remote Device MAC Address:** A list box showing multiple MAC addresses: "68:8D:B6:7E:A9:13", "68:8D:B6:7E:A9:1E", "68:8D:B6:7E:A9:22", and "68:8D:B6:7E:A9:1D".
- Wait Time:** A dropdown menu set to "20 Sec".
- Buttons:** "Get Info", "Log Clear", and "Close".
- Log:** A text area at the bottom showing the search process: "Find remote Device: 68:8D:B6:7E:A9:1D", "Device Search End", "Device Search Start", "Find Local Device: 68:8D:B6:7E:A9:23", "Find remote Device: 68:8D:B6:7E:A9:13", "Find remote Device: 68:8D:B6:7E:A9:1E", "Find remote Device: 68:8D:B6:7E:A9:22", "Find remote Device: 68:8D:B6:7E:A9:1D", and "Device Search End".



Notes:

1. If a password other than the factory default is already registered on the device or if the MAC address of the remote device is not detected in 1:1 mode, the password of the remote device and the local device should be set to the same using the "Single" mode option.
2. When changing the password of the local and remote device individually, the password of the remote device should be set first. If not, the password must be set individually using the "Single" mode option.

### 3.1.3 One-to-Many (1:N) Joining

To configure AETEK EPoX devices in a one-to-many (1:N) joining mode, follow these steps:

1. Select Network Interface: In the AETEK EPoX Manager, select the network interface name that is connected to the EPoX device(s).
2. Search for Connected Devices: Click the "**Search**" button to find the EPoX devices connected to the network. The MAC addresses of the discovered devices will be shown in the "**Local Device MAC Address**" and "**Remote Device MAC Address**" section.
3. Select Command Mode: Set the "**Command**" to "**1:N**" mode.
4. Select Local Device to Configure: Click on the MAC address of the local EPoX device you want to configure in the "**Local Device MAC Address**" section. The MAC address of the selected device will be shown in the "**Device MAC**" section.
5. Display Remote Devices: The MAC addresses of the remote devices connected to the selected local device will be displayed under the "**MAC Address**" section.
6. Set the Password (if necessary): If the device's password is set to the factory default, "HomePlugAV" will be displayed in the "**Password**" section. If the password is different from the factory default, the "**Password**" section will be blank.
  - i. To change the password, enter the desired password in the "**Password**" section.
  - ii. The password should consist of 8 digits, uppercase and lowercase letters, and numbers only. Special symbols or characters are not allowed.
7. Save the Changes: Click the "**Write**" button to save the configured settings.

AETEK EPOX Manage Tool Ver.1.00.01

① Network Interface Select  
CC:96:E5:8A:A0:D5 (Intel(R) Ethernet Connection (16) I219-LM) ② Search

③ Command 1:N

④ Device MAC  
68:8D:B6:7E:A9:23

⑥ Password  
HomePlugAV ⑦ Write

☐ MDU Save ☐ MDU ☐ Master ☐ Slave

☐ CCo Save CCo Disable

④ Local Device MAC Address  
68:8D:B6:7E:A9:23

Remote Device MAC Address  
68:8D:B6:7E:A9:13  
68:8D:B6:7E:A9:1E  
68:8D:B6:7E:A9:22  
68:8D:B6:7E:A9:1D

Wait Time: 20 Sec

⑤ 68:8D:B6:7E:A9:13  
68:8D:B6:7E:A9:1E  
68:8D:B6:7E:A9:22  
68:8D:B6:7E:A9:1D

Find remote Device: 68:8D:B6:7E:A9:1D  
Device Search End  
Device Search Start  
Find Local Device: 68:8D:B6:7E:A9:23  
Find remote Device: 68:8D:B6:7E:A9:13  
Find remote Device: 68:8D:B6:7E:A9:1E  
Find remote Device: 68:8D:B6:7E:A9:22  
Find remote Device: 68:8D:B6:7E:A9:1D  
Device Search End

Get Info  
Log Clear  
Close

#### Notes:

1. If a password other than the factory default is already registered on each device or if the MAC address of the remote device is not detected in 1:N mode, the password of the remote device and the local device should be set to the same using the "Single" mode option.
2. When changing the password of each device in 1:N mode individually, the password of the remote device should be set first. If not, the password of the remote device must be set individually using the "Single" mode option.

## 3.2 MDU (Multiple Dwelling Units) Setting

The MDU (Multiple Dwelling Units) setting is recommended for a one-to-many (1:N) configuration when the network communication is unstable, even after the joining process is properly completed.

Typically, the remote devices are set as Slaves, and the local devices are set as Masters.

For configurations where the MDU settings have already been done, the AETEK EPoX Manager must be connected to the Master device to apply the new settings. The Master device should be a local device in the AETEK EPoX Manager.

Follow these steps to configure the MDU settings:

1. Select Network Interface: In the AETEK EPoX Manager, select the network interface name that is connected to the EPoX device(s).
2. Search for Connected Devices: Click the "**Search**" button to find the EPoX devices connected to the network. The MAC addresses of the discovered devices will be shown in the "**Local Device MAC Address**" and "**Remote Device MAC Address**" section.
3. Select Command Mode: Set the "**Command**" to "**1:N**" mode.
4. Select Local Device to Configure: Click on the MAC address of the local EPoX device you want to change the MDU settings for in the "**Local Device MAC Address**" section. The MAC address of the selected device will be shown in the "**Device MAC**" section.
5. Set and Save the MDU:
  - i. Enable MDU Settings: Check the "**MDU Save**" box to save the MDU settings.
  - ii. Activate MDU: Check the "**MDU**" box to activate the MDU settings.
  - iii. Set Master or Slave: Select either the "Master" or "Slave" radio button to set the device's role in the MDU configuration.
6. Save the Changes: Click the "**Write**" button to save the configured settings.
7. Repeat for Local Device: Repeat steps 4-9 for the local device(s) in the AETEK EPoX Manager.

AETEK EPOX Manage Tool Ver.1.00.01

① Network Interface Select  
CC:96:E5:8A:A0:D5 (Intel(R) Ethernet Connection (16) I219-LM) ② Search

③ Command 1:N

④ Device MAC  
68:8D:B6:7E:A9:23

Password

⑤ ☒ MDU Save ☒ MDU ☒ Master ☐ Slave

☐ CCo Save CCo Disable

④ Local Device MAC Address  
68:8D:B6:7E:A9:23

Remote Device MAC Address  
68:8D:B6:7E:A9:13  
68:8D:B6:7E:A9:1E  
68:8D:B6:7E:A9:22  
68:8D:B6:7E:A9:1D

Wait Time: 20 Sec

Get Info  
Log Clear  
Close

Find remote Device: 68:8D:B6:7E:A9:1D  
Device Search End  
Device Search Start  
Find Local Device: 68:8D:B6:7E:A9:23  
Find remote Device: 68:8D:B6:7E:A9:13  
Find remote Device: 68:8D:B6:7E:A9:1E  
Find remote Device: 68:8D:B6:7E:A9:22  
Find remote Device: 68:8D:B6:7E:A9:1D  
Device Search End